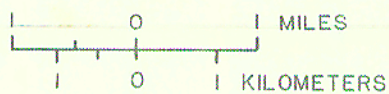
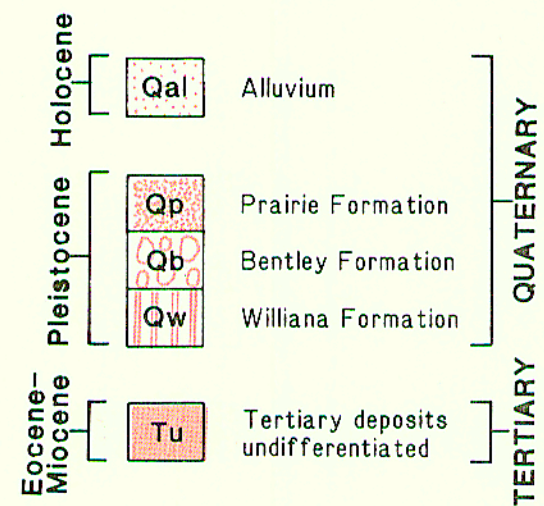


Base from U.S. Geological Survey
Boyce, 1956 and Colfax, 1956

Geology modified after Fisk, 1938



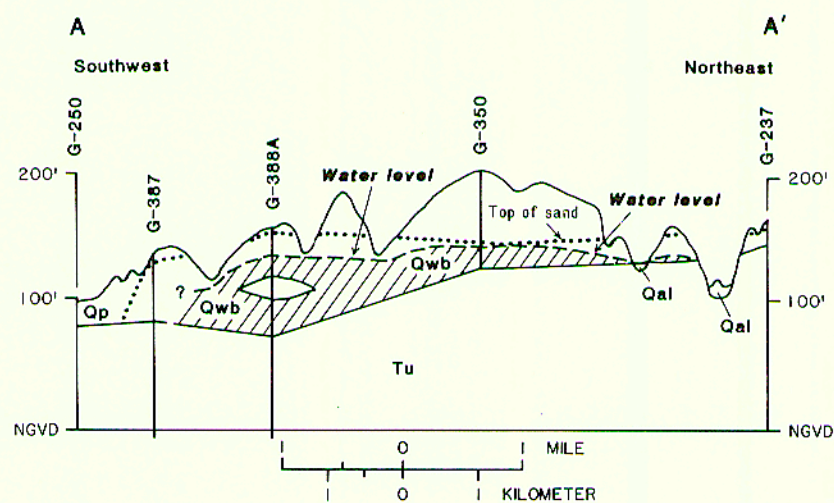
EXPLANATION



A — A' Geohydrologic section

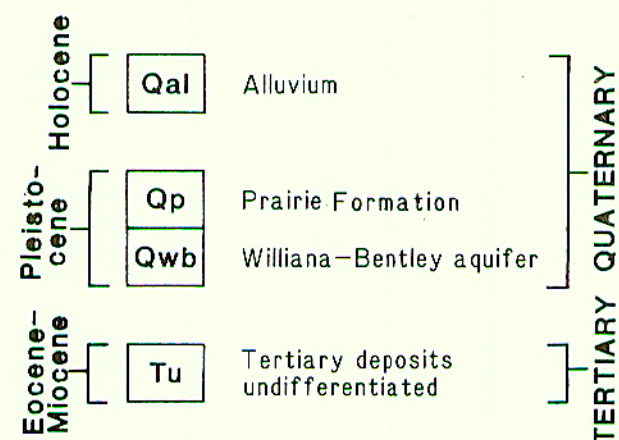
24 ● Well or test site, number is measured or estimated thickness of saturated sand, in feet

A. Surface geology and saturated-sand thickness.



B. Southwest-northeast geohydrologic section.

EXPLANATION



Saturated sand

NGVD National Geodetic Vertical Datum of 1929