

EXPLANATION

Pleistocene	[]	Qal	Alluvium	QUATERNARY
		Qp	Prairie Formation	
		Qm	Montgomery Formation	
		Qb	Bentley Formation	
Eocene-Miocene	[]	Qw	Williana Formation	TERTIARY
		Tu	Tertiary deposits undifferentiated	

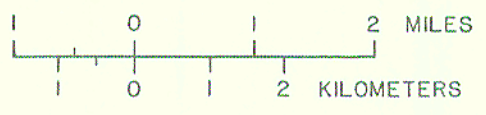
D — D' Geohydrologic section.

85 ● Well or test site; number is measured or estimated thickness of saturated sand, in feet

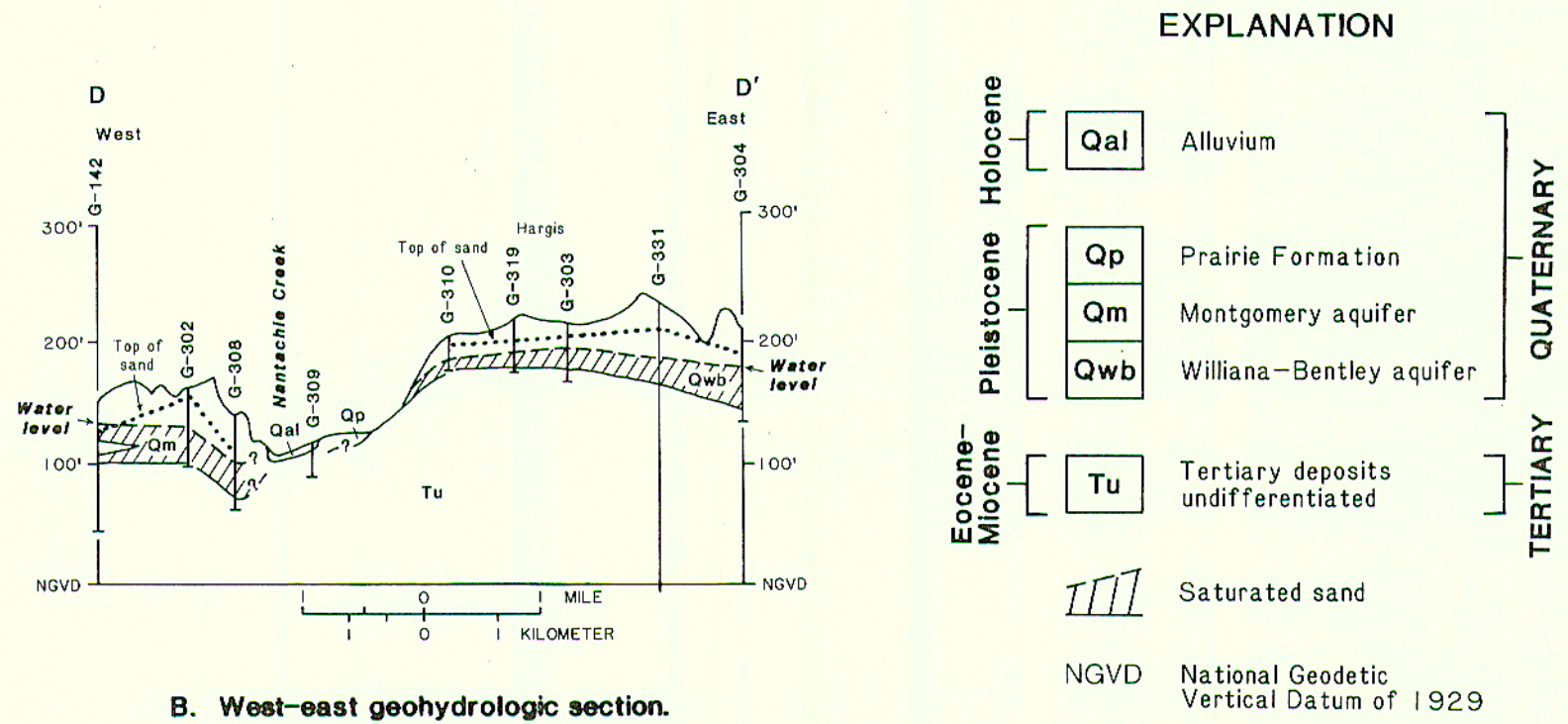
A Artesian conditions at well

$\frac{120}{0.08}$ Hardness (milligrams per liter) Iron (milligrams per liter)

Base from U.S. Geological Survey Calvin, 1955 and Montgomery, 1957
 Geology modified after Fisk, 1938 and Huner, 1939



A. Surface geology, saturated-sand thickness, and hardness and iron concentration.



B. West-east geohydrologic section.

PLATE 9. MAP AND SECTION SHOWING GEOLOGY, SATURATED-SAND THICKNESS, AND HARDNESS AND IRON CONCENTRATION, HARGIS-MONTGOMERY AREA, GRANT AND WINN PARISHES, LOUISIANA.